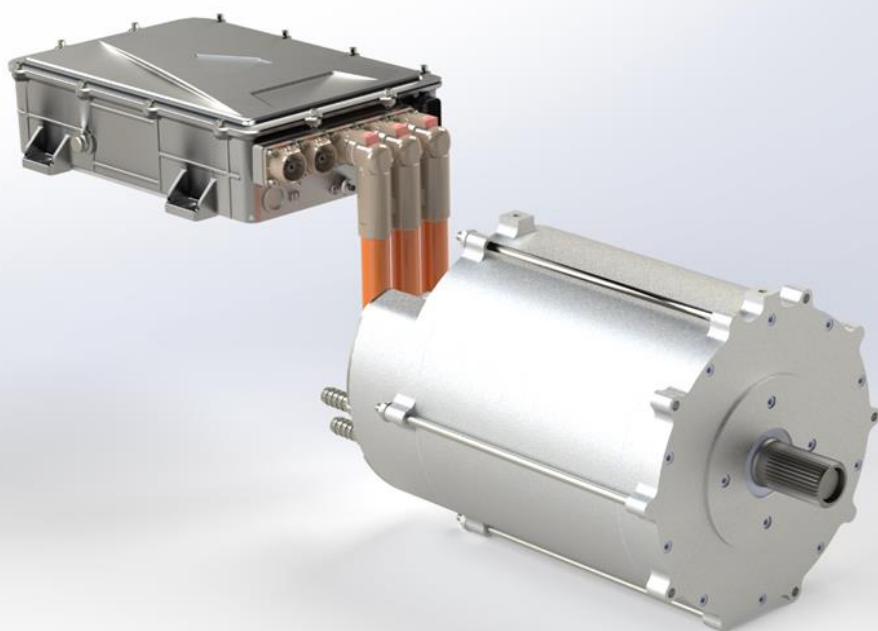


 **traction**TM
rEV235-3U-WN050

Powering Performance: Precision Motor and Inverter Pairing for Automotive Excellence

Learn more

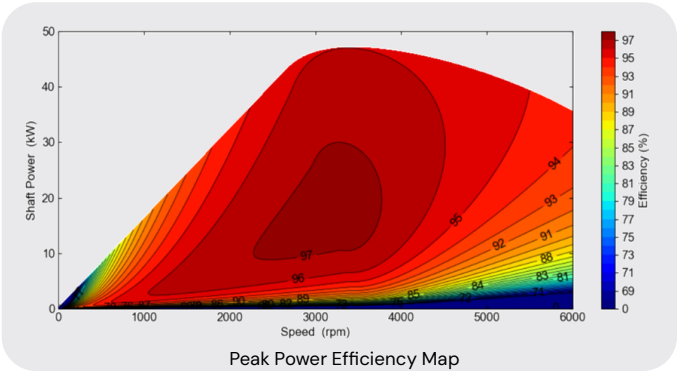
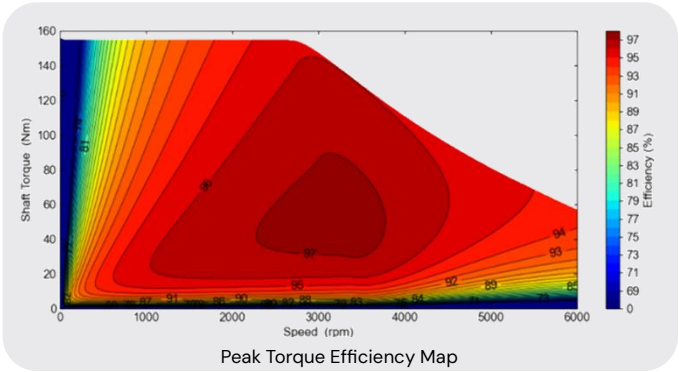
[Inetivtraction.com](https://inetivtraction.com)



 **Netiv**



Motor Data



Electrical Specification	UNIT	
Motor / Generator Type		3-Phase Radial Synchronous Flux Permanent Magnet Motor/Generator
Applications		Automotive Motorsport, Off-Highway, Motorcycle, Passenger Vehicle, Commercial Vehicle, Rail, Marine and Power Generation
DC Voltage (Nominal)	VDC	96
Maximum Phase Current (Motor)	Arms	450
Rotor Position Sensor		Resolver

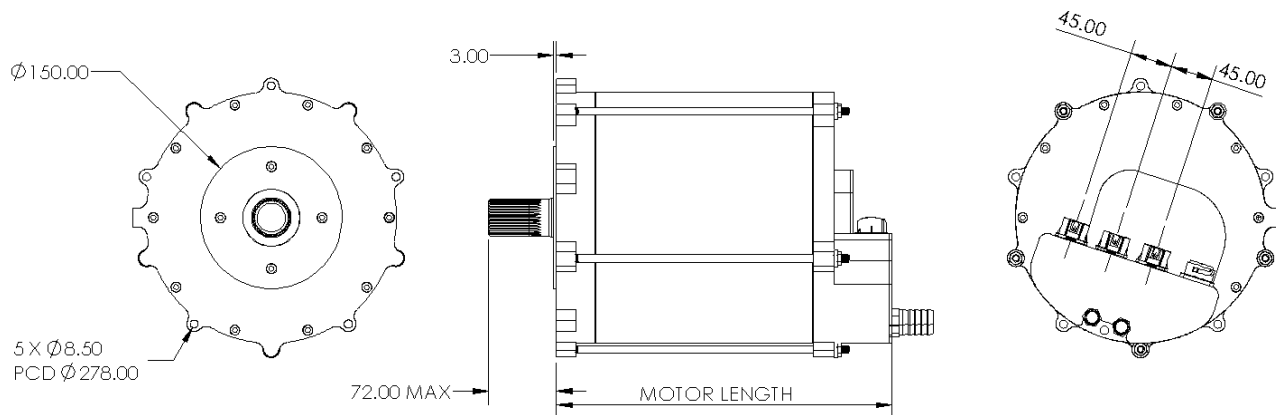
Performance Specification		
Peak Torque (For 10s)	Nm	154
Peak Power (For 10s)	kw	48
Continuous Torque	Nm	46
Continuous Power	kw	11

Mechanical Specification		
Cross Section Dimension	mm	265.6
Package Length (Excluding Shaft)	mm	227.5
Mass	kg	48
Maximum Speed	rpm	6,000
Axial/Radial Shaft Load	N	100N Axial, 200N Radial
Shaft Output		External Spline
Ingress Protection	IP	IP67
Motor Connection Type		PowerLok Connectors
Cogging Torque	Nm	<2.5%

Thermal Specification		
Cooling Method		Natural
Maximum Stator Winding Temperature	°C	180
De-Rate Stator Winding Temperature	°C	165
Temperature Sensor	-	PT1000
Ambient Temperature	°C	-20 to 100

NOTE: 1) Mass: excludes cables and coolant tubes, 2) Peak Values are simulated using 96VDC and 450Arms, 3) Continuous Values are simulated using 96VDC, 4) The data provided in this datasheet is for guidance only and does not form part of any contract. 5) Motor, inverter, gearbox should undergo application testing to validate performance.

Motor Geometry



Explore inetictraction.com to design your drive system with multiple configurations, matched gearboxes